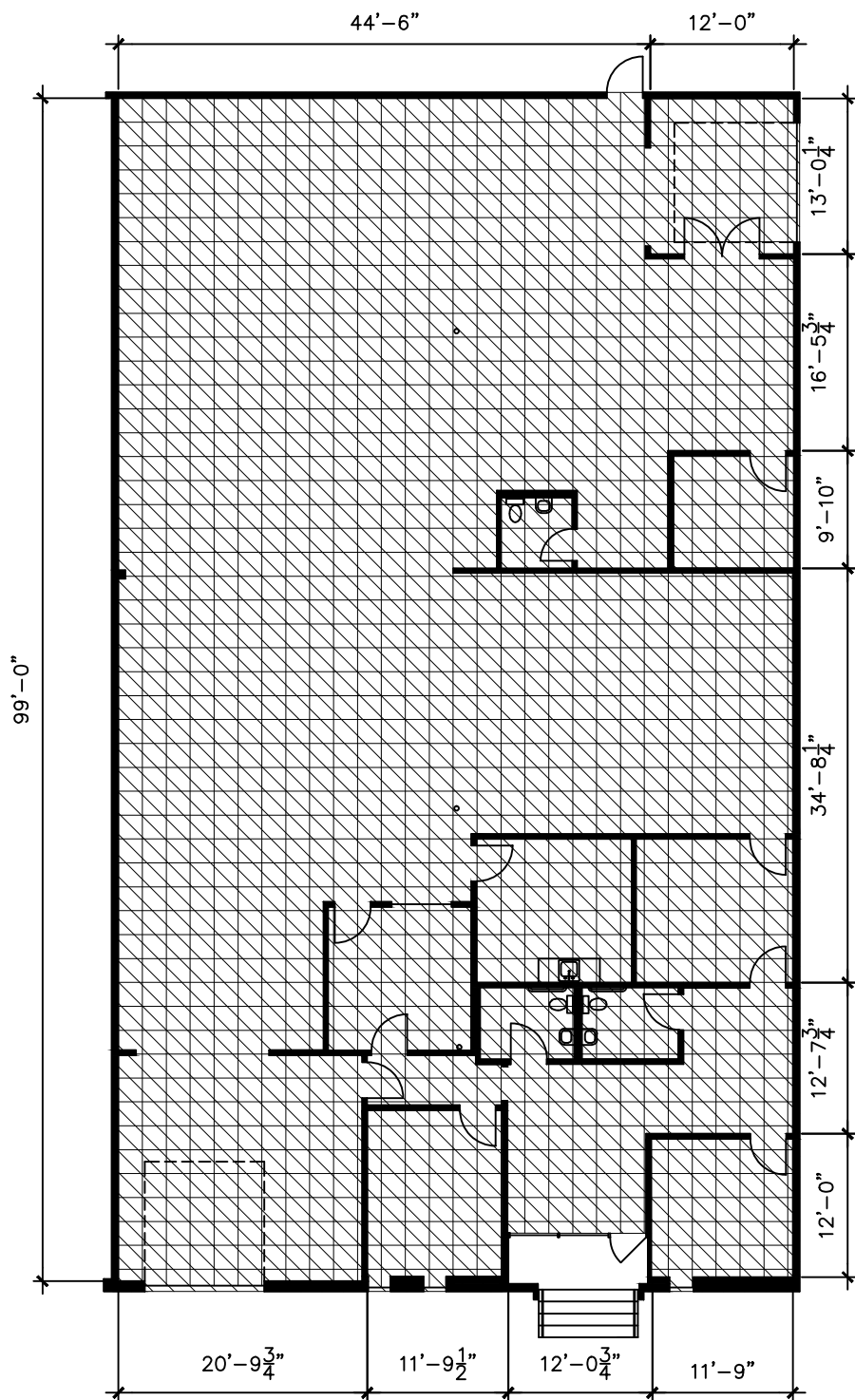


Office SF = 1,505
 Warehouse SF = 4,238
 Total RSF = 5,743

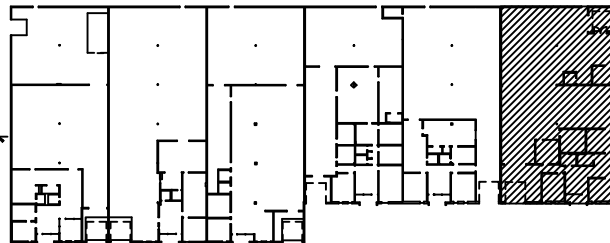


NOTE:
 Overlying grid is 2' x 2'
 Not to scale.

 Air Conditioned Area



PARK LAYOUT



← NEILS THOMPSON RD. →

Drawing for:
 L.H. LAYNE COMPANY
 404 W. Powell, Ste. 202
 Austin, Texas 78753
 Ph: 252-9900 Fax: 252-9902

INDUSTRIAL TERRACE
 9411 NEILS THOMPSON RD.
 RENTABLE AREA: 5,743 S.F.

THE MEASUREMENTS AND
 FLOOR PLANS ARE ACCURATE
 TO WITHIN 2% INTERIOR WALLS
 AND DEMISING WALLS ARE
 ASSUMED TO BE 5" THICK.
 Project No.: 20306.04
 Rev. Date: July 29, 2016
 ©2016

DIMENSIONS
 FLOOR PLANS
 www.dimensionsfloorplans.com
 Austin, Texas 78731
 Ph: 342-0114 Fax: 237-7814