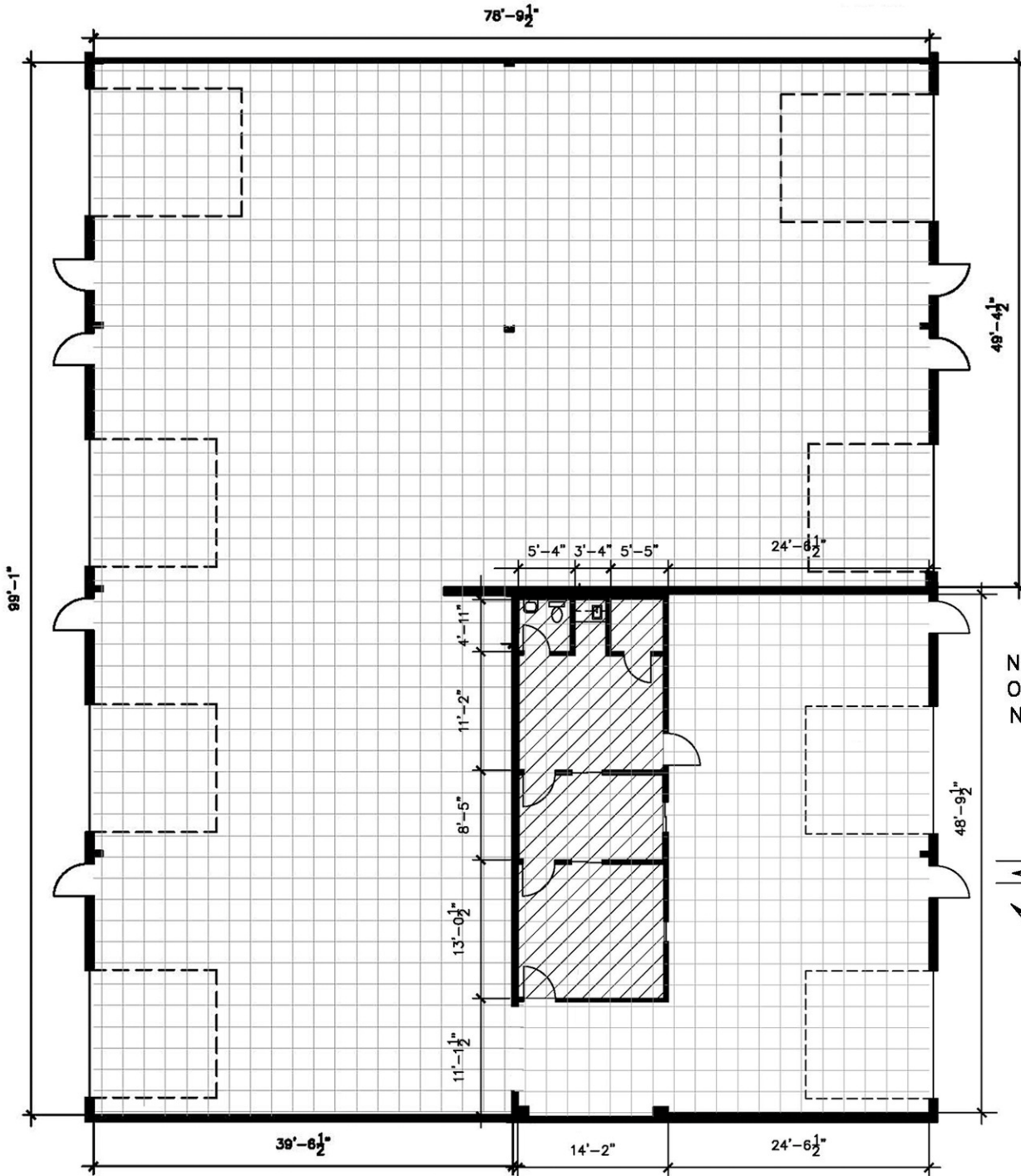
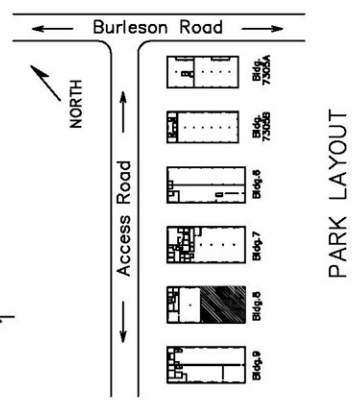


Office SF = 554
 Warehouse SF = 7,469
 Total RSF = 8,023



NOTE:
 Overlying grid is 2' x 2'
 Not to scale.



Drawing for:
L.H. LAYNE COMPANY
 404 W. Powell, Ste. 202
 Austin, Texas 78753
 Ph: 252-9900 Fax: 252-9902

SUITE 822-825
OMNI BUSINESS PARK
 7303 Burleson Rd.
 RENTABLE AREA: 8,023 S.F.

THE MEASUREMENTS AND FLOOR PLANS ARE ACCURATE TO WITHIN 2% INTERIOR WALLS AND DIMENSION WALLS ARE ASSUMED TO BE 5" THICK.
 Project No.: 20306.03
 Rev. Date: Oct. 23, 2009
 ©2009

+DIMENSIONS+
FLOOR PLANS
 www.dimensionsfloorplans.com
 Austin, Texas
 Ph: 342-0114 Fax: 342-1965