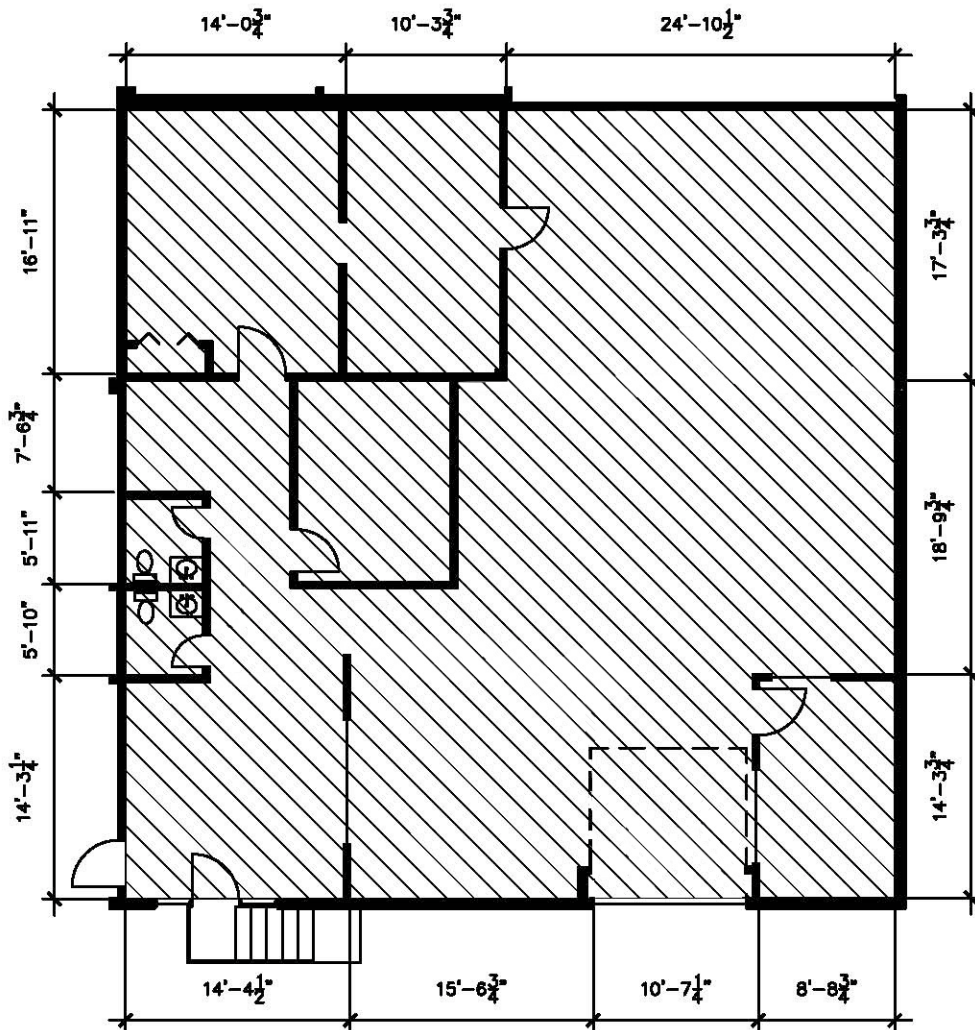


Office SF = 1,125
 Warehouse SF = 1,458
 Total RSF = 2,583

NOTE:
 Overlying grid is 2' x 2'
 Not to scale.

 Air Conditioned Area



Drawing for:
 L.H. LAYNE COMPANY
 404 W. Powell, Ste. 202
 Austin, Texas 78753
 Ph: 252-9900 Fax: 252-9902

SUITE F
 MCKALLA - LAYNE
 10109 MCKALLA PLACE
 RENTABLE AREA: 4,272 S.F.

THE MEASUREMENTS AND FLOOR PLANS ARE ACCURATE TO WITHIN 2% INTERIOR WALLS AND DEMISING WALLS ARE ASSUMED TO BE 5" THICK.
 Project No.: 20410.01
 Rev. Date: Jan. 12, 2004
 ©2004

†DIMENSIONS†
 FLOOR PLANS
 7301 Waterline Rd.
 Austin, Texas 78731
 Ph: 342-0114 Fax: 342-1965