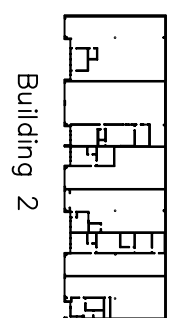
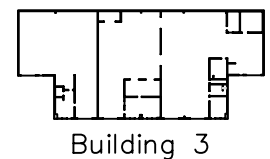


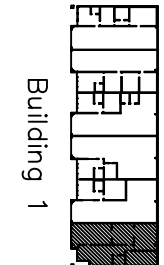
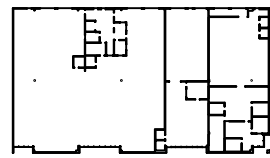
Office SF = 1,278  
 Warehouse SF = 526  
 Total RSF = 1,804

NOTE:  
 Overlying grid is 2' x 2'  
 Not to scale.

 Air Conditioned Area



PARK LAYOUT



← W. Powell Ln. →

Drawing for:  
 L.H. LAYNE COMPANY  
 404 W. Powell, Ste. 202  
 Austin, Texas 78753  
 Ph: 252-9900 Fax: 252-9902

SUITE 101  
 CENTRAL PARK NORTH  
 404 W. POWELL LN.  
 RENTABLE AREA: 1,804 S.F.

THE MEASUREMENTS AND FLOOR PLANS ARE ACCURATE TO WITHIN 2% INTERIOR WALLS AND DEMISING WALLS ARE ASSUMED TO BE 5" THICK.  
 Project No.: 20306.02  
 Date: April 4, 2003  
 ©2003

† DIMENSIONS †  
 FLOOR PLANS  
 4412 Spicewood Spgs. Rd., Ste 803  
 Austin, Texas 78759  
 Ph: 342-0114 Fax: 342-1965