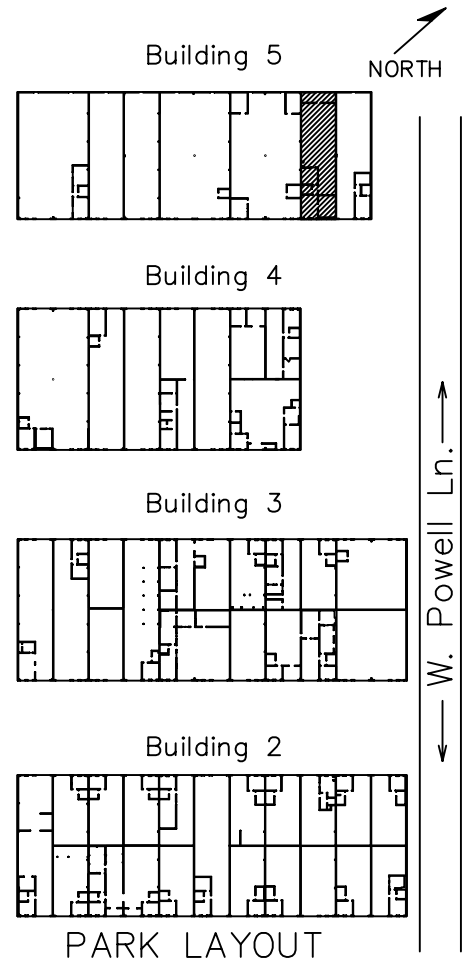


Office SF = 448
 Warehouse SF = 1,777
 Total RSF = 2,225

NOTE:

Overlying grid is 2' x 2'
 Not to scale.

 Air Conditioned Area



Drawing for:
 L.H. LAYNE COMPANY
 404 W. Powell, Ste. 202
 Austin, Texas 78753
 Ph: 252-9900 Fax: 252-9902

SUITE 502
 AUSTECH BUSINESS PARK
 501 W. POWELL LN.
 RENTABLE AREA: 2,225 S.F.

THE MEASUREMENTS AND FLOOR PLANS ARE ACCURATE TO WITHIN 2% INTERIOR WALLS AND DEMISING WALLS ARE ASSUMED TO BE 5" THICK.
 Project No.: 20306.01
 Rev. Date: April 22, 2003
 ©2009

DIMENSIONS
 FLOOR PLANS
 Austin, Texas
 www.dimensionsfloorplans.com
 Ph: 342-0114 Fax: 342-1965