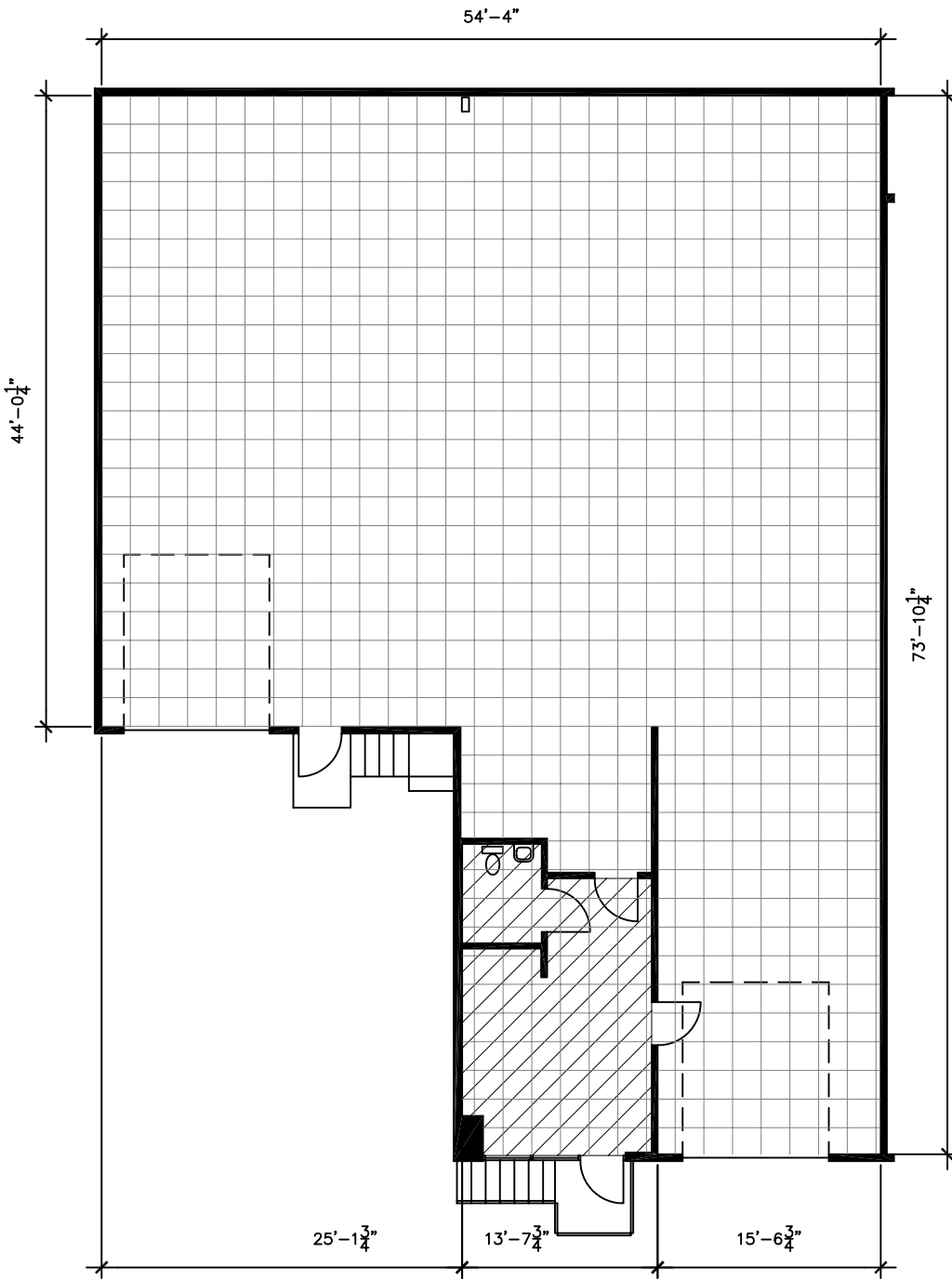
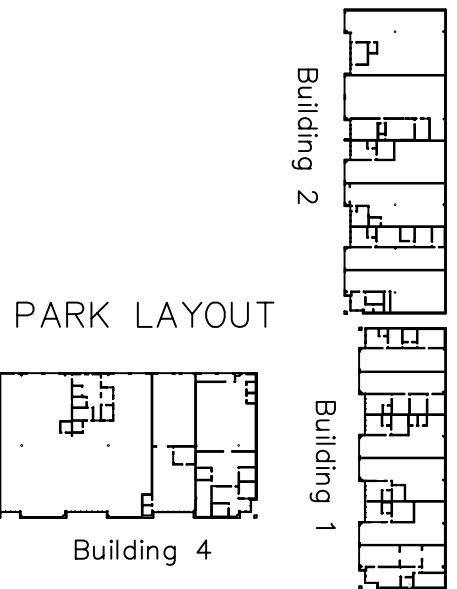
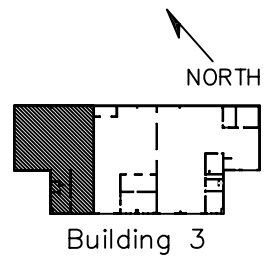


Office SF = 306
 Warehouse SF = 3,064
 Total RSF = 3,370



NOTE:
 Overlying grid is 2' x 2'
 Not to scale.

 Air Conditioned Area



← W. Powell Ln. →

Drawing for:
 L.H. LAYNE COMPANY
 404 W. Powell, Ste. 202
 Austin, Texas 78753
 Ph: 252-9900 Fax: 252-9902

SUITE 306
 CENTRAL PARK NORTH
 404 W. POWELL LN.
 RENTABLE AREA: 3,370 S.F.

THE MEASUREMENTS AND FLOOR PLANS ARE ACCURATE TO WITHIN 2% INTERIOR WALLS AND DEMISING WALLS ARE ASSUMED TO BE 5" THICK.
 Project No.: 20306.02
 Date: April 4, 2003
 ©2003

† DIMENSIONS †
 FLOOR PLANS
 4412 Spicewood Spgs. Rd., Ste 803
 Austin, Texas 78759
 Ph: 342-0114 Fax: 342-1965