
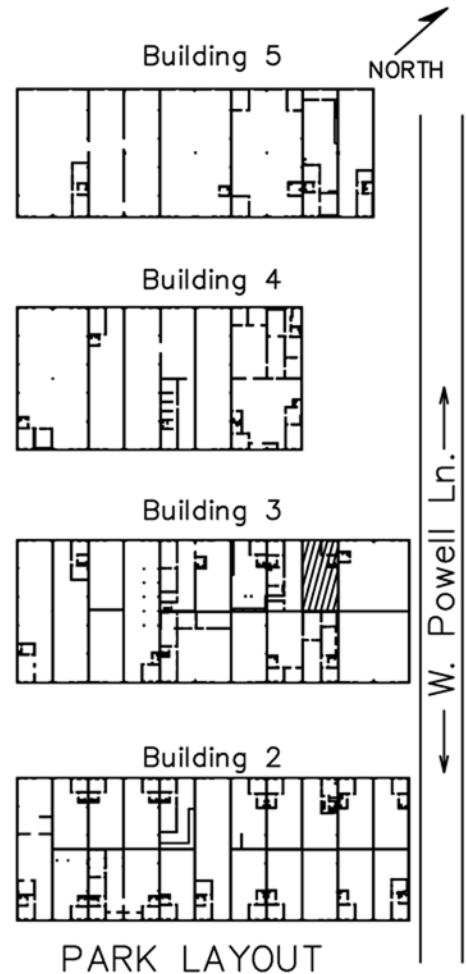


Office SF = 391
 Warehouse SF = 865
 Total RSF = 1,256

NOTE:
 Overlying grid is 2' x 2'
 Not to scale.

 Air Conditioned Area



Drawing for:
 L.H. LAYNE COMPANY
 404 W. Powell, Ste. 202
 Austin, Texas 78753
 Ph: 252-9900 Fax: 252-9902

SUITE 320
 AUSTECH BUSINESS PARK
 501 W. POWELL LN.
 RENTABLE AREA: 1,256 S.F.

THE MEASUREMENTS AND
 FLOOR PLANS ARE ACCURATE
 TO WITHIN 2% INTERIOR WALLS
 AND DEMISING WALLS ARE
 ASSUMED TO BE 5" THICK.
 Project No.: 20306.01
 Date: April 15, 2003
 ©2003

† DIMENSIONS †
 FLOOR PLANS
 4412 Spicewood Spgs. Rd., Ste 803
 Austin, Texas 78759
 Ph: 342-0114 Fax: 342-1965