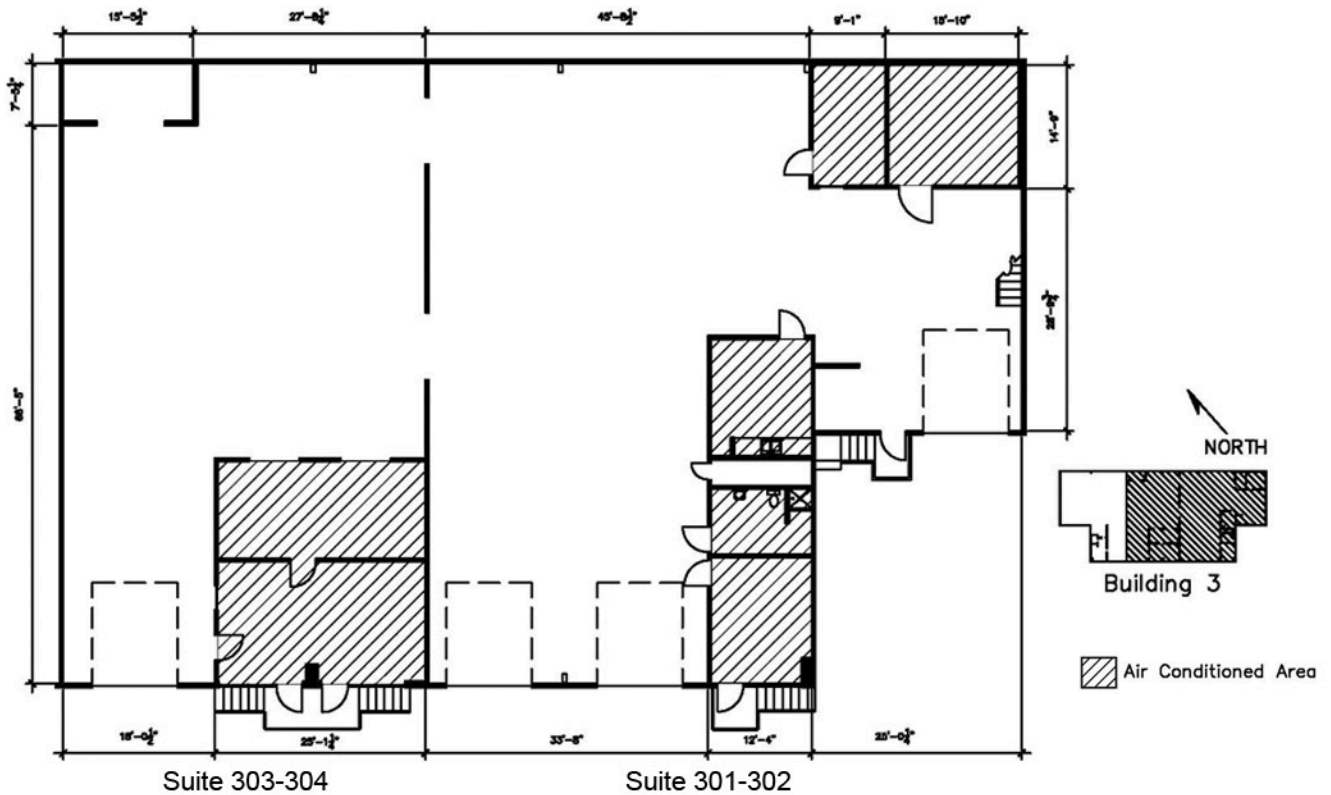


Available December 2016

# Central Park North

Building 300



- SUITE 301-302** - \$4,112.84mo - 4,580sf (973sf OFFICE), 2 DOCK LEVEL DOORS, 1 GRADE LEVEL DOOR, FOUR OFFICES
- SUITE 303-304** - \$3,088.58mo - 3,258sf (654sf OFFICE), 1 DOCK LEVEL DOOR, THREE OFFICES



- Can configure as one space-7,838sf.
- Leases are NNN.
- Rates listed are gross amount.

Contact Eric Layne, CCIM  
512-252-9900  
eric@laynecompany.com

visit our website for  
other available properties:  
www.laynecompany.com